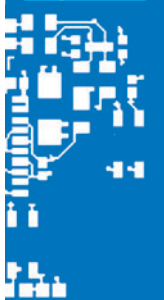
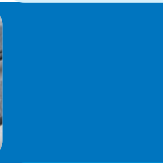
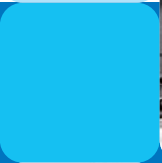
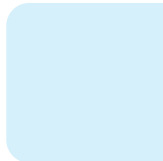




Durostone® – PCB Solder Pallet Materials

High performance composite materials specifically designed for the PCB assembly process



Durostone®

Fibre reinforced plastics

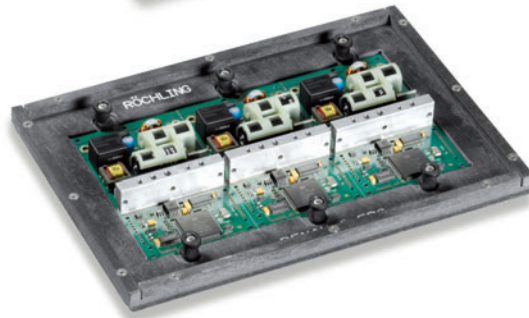
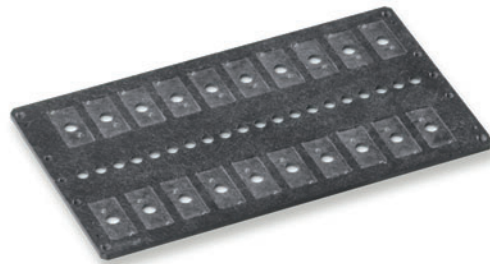


Durostone® PCB Solder Pallet Materials

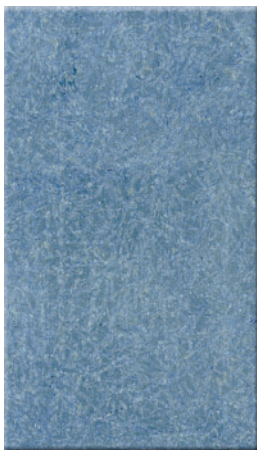


Durostone® materials have been developed for all procedures within the PCB assembly process. There are three main grades which are suitable for use in the SMT reflow and wave soldering processes, **Durostone® CHP760, CAS761 & CAG762**. These materials offer the following features,

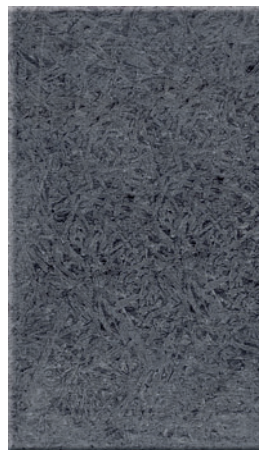
- Excellent mechanical properties at elevated temperatures including the lead-free process.
- Low thermal conductivity.
- Excellent machining properties enabling the manufacture of complex design solder pallets.
- Good resistance to chemicals used in modern fluxes.



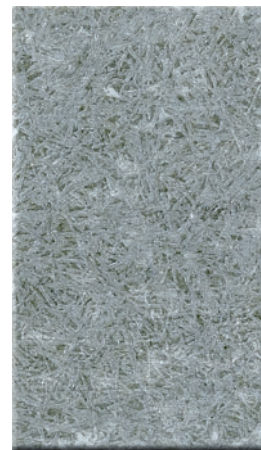
CHP760



CAS761



CAG762



Durostone® Harsh environments

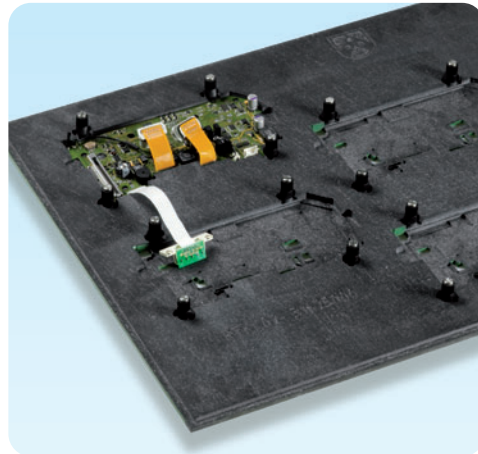
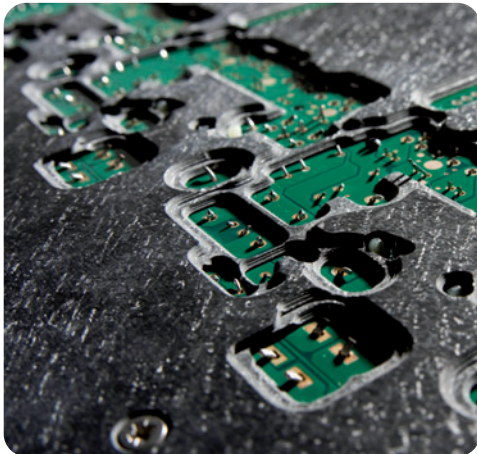
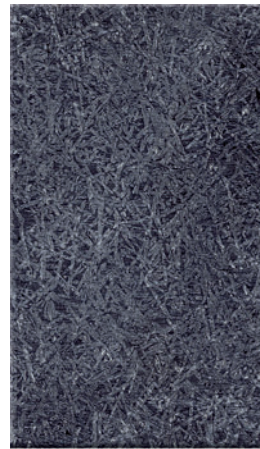
A combination of flux, temperature and process cycles can result in the degradation of the standard Durostone® grades of material.

The solution is **Durostone® CFR767** which has been specifically formulated for use with aggressive fluxes and high process temperatures.

The resin used to produce Durostone® CFR767 can withstand temperatures up to 300°C. The decision to use Durostone® CFR767 over one of the standard grades is made when the solder bath temperature exceeds 265°C and the bottom side PCB pre-heat exceeds 140°C.

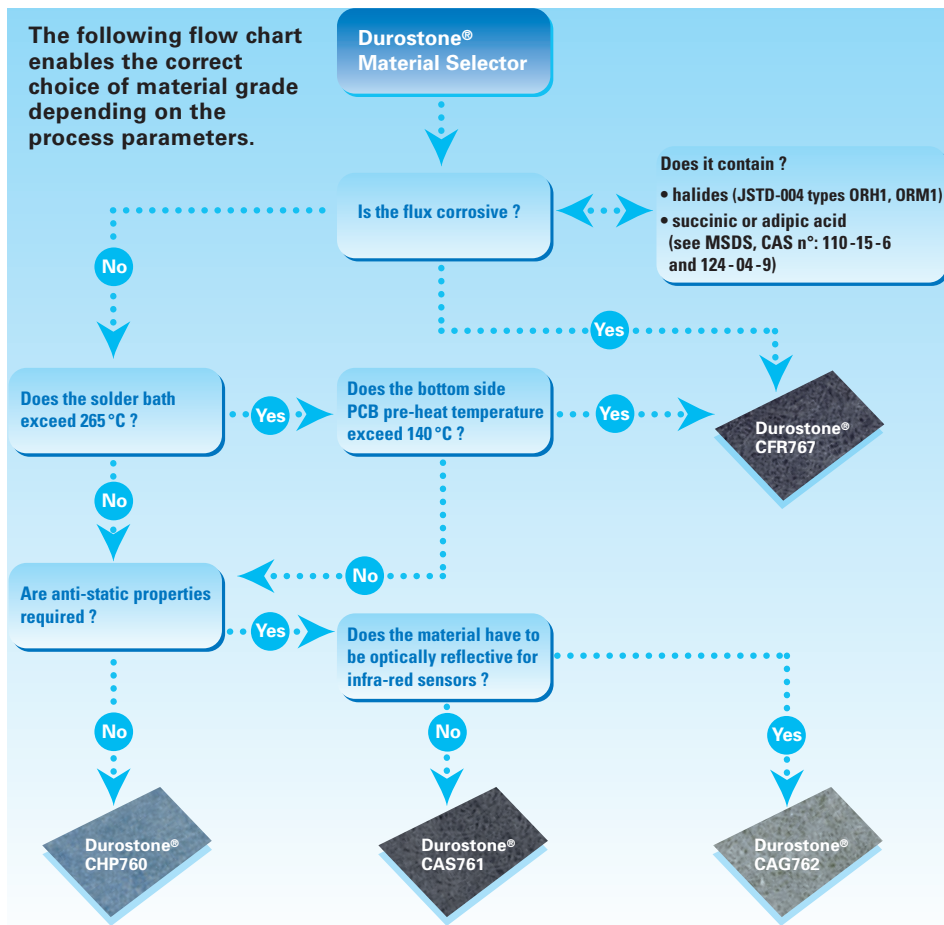
Durostone® CFR767 has excellent flux resistance. When fluxes containing halides or dicarboxylic acids are used in high volume production the lifespan of the standard grades of material can be reduced so Durostone® CFR767 is an ideal solution.

CFR767



Durostone® Material Selector

The following flow chart enables the correct choice of material grade depending on the process parameters.



Technical Data		CHP760	CAS761	CAG762	CFR767
Grade		Standard	Anti-Static	Anti-Static Optical	Flux Resistant
Colour		Blue	Black	Grey	Black
Density (g/cm ³)		1.90	1.90	1.90	1.80
Flexural Strength 3 point support ⊥ (MPa)	@ 23°C	360	360	360	380
	@ 150°C	180	180	180	260
	@ 185°C	–	–	–	150
Modulus of Elasticity (MPa)	@ 23°C	18,000	18,000	18,000	18,000
	@ 150°C	9,000	9,000	9,000	14,000
	@ 185°C	–	–	–	10,000
Water Absorption (%)		< 0.20	< 0.20	< 0.20	< 0.20
Coefficient of Linear Expansion (10 ⁻⁶ /K) between 30°C & 200°C		13	11	11	11
Thermal Conductivity (W/m ² K)		0.25	0.25	0.25	0.23
Maximum Operating Temperature (°C) 10 – 20 seconds		300	300	300	380
Standard Operating Temperature (°C)		260	260	260	300
Surface Resistivity (ohms)		–	10 ⁵ - 10 ⁸	10 ⁵ - 10 ⁸	10 ⁵ - 10 ⁸
Chemical Resistance		Good	Good	Good	Excellent
Sheet Size (mm)		2440 x 1220			
Thickness' available (mm)		3	4, 5, 6, 8, 10, 12		5, 6, 8, 10
Thickness Tolerance		± 0.10	+ 0.20		
Flatness Tolerance (for a panel size of 300 x 300)		0.20			
Parallelism		0.10			



**Röchling
Permal Composites S.A.S.**
8, Rue André Fruchard
B.P.12, Maxéville
54527 LAXOU Cedex/France
Tel. +33 383 34 24 24
Fax +33 383 32 23 18
info@permali.com
www.permali.com/pallets

**Roechling
Engineering Plastics Pte. Ltd.**
No. 14 Tuas Avenue 8
Singapore 639229/Singapore
Tel. +65 6 863 18 77
Fax +65 6 863 17 66
www.durostone.com.cn
www.roechling-asia.com

**Röchling
Machined Plastics**
161 Westec Drive
Mount Pleasant, PA 15666/USA
Tel. +1 724 696-5200
Fax +1 724 696-5300
www.roechling.biz
rmp@roechling.biz

**Röchling
Technische Kunststoffe KG**
Guerickestr. 5
06686 Lützen/Germany
Tel. +49 34444 308-0
Fax +49 34444 308-10
kontakt@roechling-luetzen.de
www.roechling-luetzen.de

**Röchling
Engineering Plastics (UK) Ltd.**
Waterwells Business Park
Waterwells Drive
Gloucester GL2 4AA/Great Britain
Tel. +44 1452 72-7900
Fax +44 1452 72-8056
sales@roechling-plastics.co.uk
www.roechling-plastics.co.uk

**Röchling
Machined Plastics Italia s.r.l.**
Via Boldrocchi 5/7
20046 Biassono, Milano/Italy
Tel. +39 039 2324324
Fax +39 039 2324331
compositi@roechling.it
www.roechling.it

**Roechling
Engineering Plastics (India) Pvt. Ltd.**
302, A Wing
Leo, 24th Road
Khar West, Mumbai - 400 052/India
Tel. +91 22 2648 22 61 or -62
Fax +91 22 2648 22 63
durostone@roechling-india.com

● Durostone® stocking locations



rc6452/0208/.../.../GB